

World Class Scan

“Our organisation has been actively engaged in continuous improvement for a long time. What improvements have we realised, and on what should we focus in the future?”

Has your organisation already started to implement WCM, Lean Manufacturing, TPM, TQM, JIT or Six Sigma and do you wonder what you should aim at to successfully follow-up the implementation? In that case it makes sense to visualise those methods that contribute to successful continuous improvement and to investigate the organisation with these points in mind. Here it is important that the results are shared by the entire organisation. The World Class Scan offers the opportunity to do this.

World Class level?

What are the characteristics of successful World Class companies? They are capable of finding the ideal balance between meeting the needs of their shareholders, customers, employees, their surroundings and partners. In addition, they are capable of improving their performance for the various interested parties at the right moment, to in this way remain the best. Justifiably WORLD CLASS.

The quality of the organisation is determined based on the following criteria:

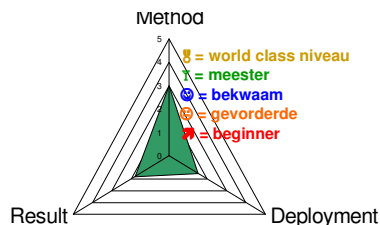
- Method: The system and sophistication of the methods used.
- Deployment: The degree of deployment in the teams, processes and/or products.
- Results: The results of the methods.

The score is classified in the following five levels:

1. Starter
2. Advanced
3. Skilled
4. Master
5. World Class

The figure below shows an example of the results of the World Class Scan.

Personnel Management System



Overall findings

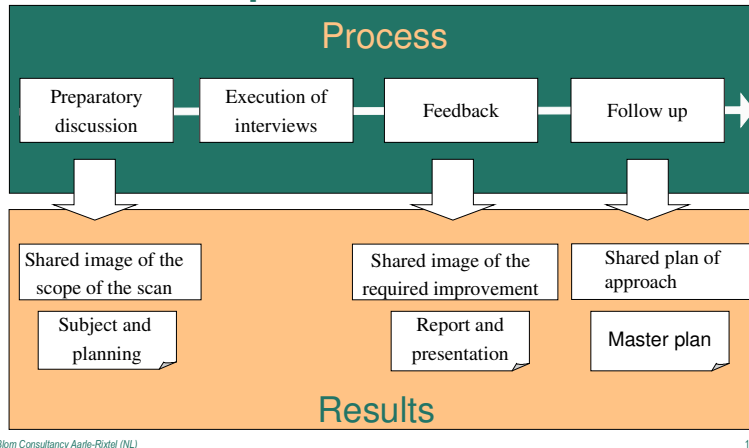
WCM building blocks	WCM systems	Score on Method	Score on Deployment	Score on Result
Strategy development	Strategy	☹️	👉	👍
Process-management	Quality	☹️	👍	👉
	HSE	☹️	☹️	👉
	Maintenance	☹️	👍	👉
	Flow	👉	👉	👉
Performance measurement and improvement	Information	👍	👍	👉
	Improvement	☹️	👉	☹️
Organisation development	Personnel	👍	👉	👉
	Organisation	☹️	👉	👉
	Standardisation	👉	👉	👉

Practical implementation of the World Class Scan

During a preparatory discussion, the subject of the scan is determined together with the processes within your company on which the scan should concentrate. The interviews are

planned based on this decision. The interviews are conducted with employees from all levels of the organisation. The results are explained by means of a presentation. In addition, the results are summarised in a concise and clear report that also includes the points of attention for the future. To concretely substantiate these points of attention, an (amended) master plan is drawn up.

World Class Scan Process steps and results



Results after executing the World Class Scan

- The scan provides shared insight into the quality of the working methods used within the organisation.
- The scan indicates the World Class methods on which the organisation should concentrate to get closer to the World Class predicate.
- Based on the scan it can be determined how the organisation can best work towards the World Class predicate, or put another way, towards continuous improvement in the organisation.

The role of Blom Consultancy

- Executing the World Class Scan, including reporting and feedback in the form of a presentation.
- Concrete recommendations to improve in a focussed way.
- Coaching the improvement process.

More information?

Blom Consultancy bv, Heuvel 11, 5737 BX Lieshout (NL)
Tel. +31 (0)499 – 42 79 79 ; Fax. +31 (0)499 – 42 79 78
Website: [www. BlomConsultancy.nl](http://www.BlomConsultancy.nl); email: info@BlomConsultancy.nl